

SEG Lightbox Display

Collapsible Frame



Step 1: Unpack all the contents of the carry bag.



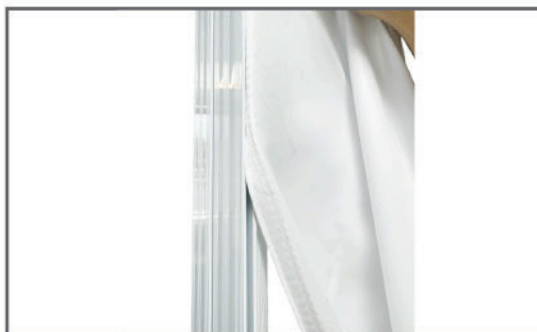
Step 2: Rotate both feet so they are facing outwards. Ensure the frame is sitting flat on the ground.



Step 3: Lift up the system from the middle to extend the frame to its full height.



Step 4: Insert the middle support bar into the center of the frame, slotting it into the grooves provided.



Step 5: Install the fabric on the first side by inserting the silicone edge into the tracks around the perimeter of the frame. Repeat this process for the second fabric.



Step 6: Plug your lightbox display into a power point and turn it on. You should now have a great looking Collapsible SEG Lightbox Display!